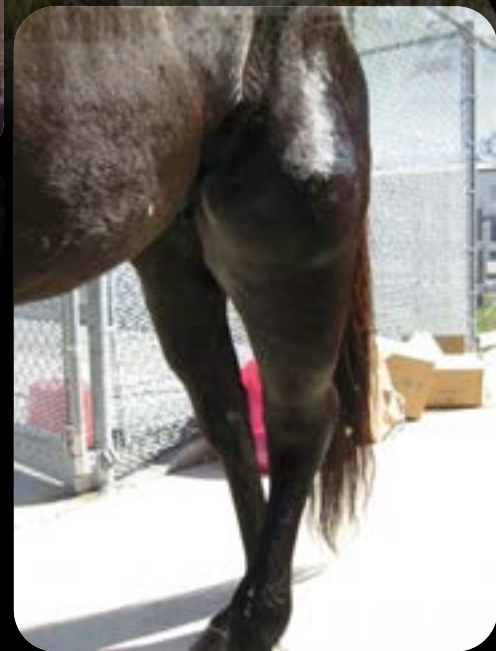
The background of the slide is a black field filled with numerous microscopic lymphocytes. These cells are shown in various orientations and sizes, with some appearing as large, rounded cells with distinct nuclei and others as smaller, more elongated forms. The overall effect is a dense, textured pattern of biological cells.

THE LYMPHATIC SYSTEM OF THE HORSE

**AIM AND APPROACH OF AN
OSTEOPATHIC TREATMENT**

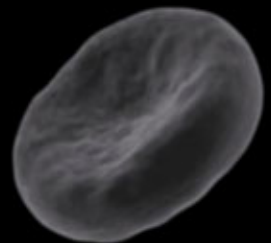
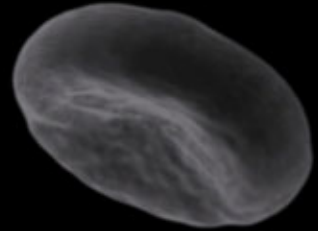


A collection of grayscale micrographs of lymphocytes of various sizes and shapes, scattered across a black background. The cells show different morphologies, including large cells with prominent nuclei and smaller, more rounded cells. The text 'LYMPH & HOMEOSTASIS' is overlaid in the center in a light blue, serif font.

LYMPH & HOMEOSTASIS

Homeostasis is made possible via 3
paths of communication:

- Neurological
- Endocrinal (ex: hormones)
- *Immunological (via blood & lymph)*



INFECTION

**TISSULAR
LESION**

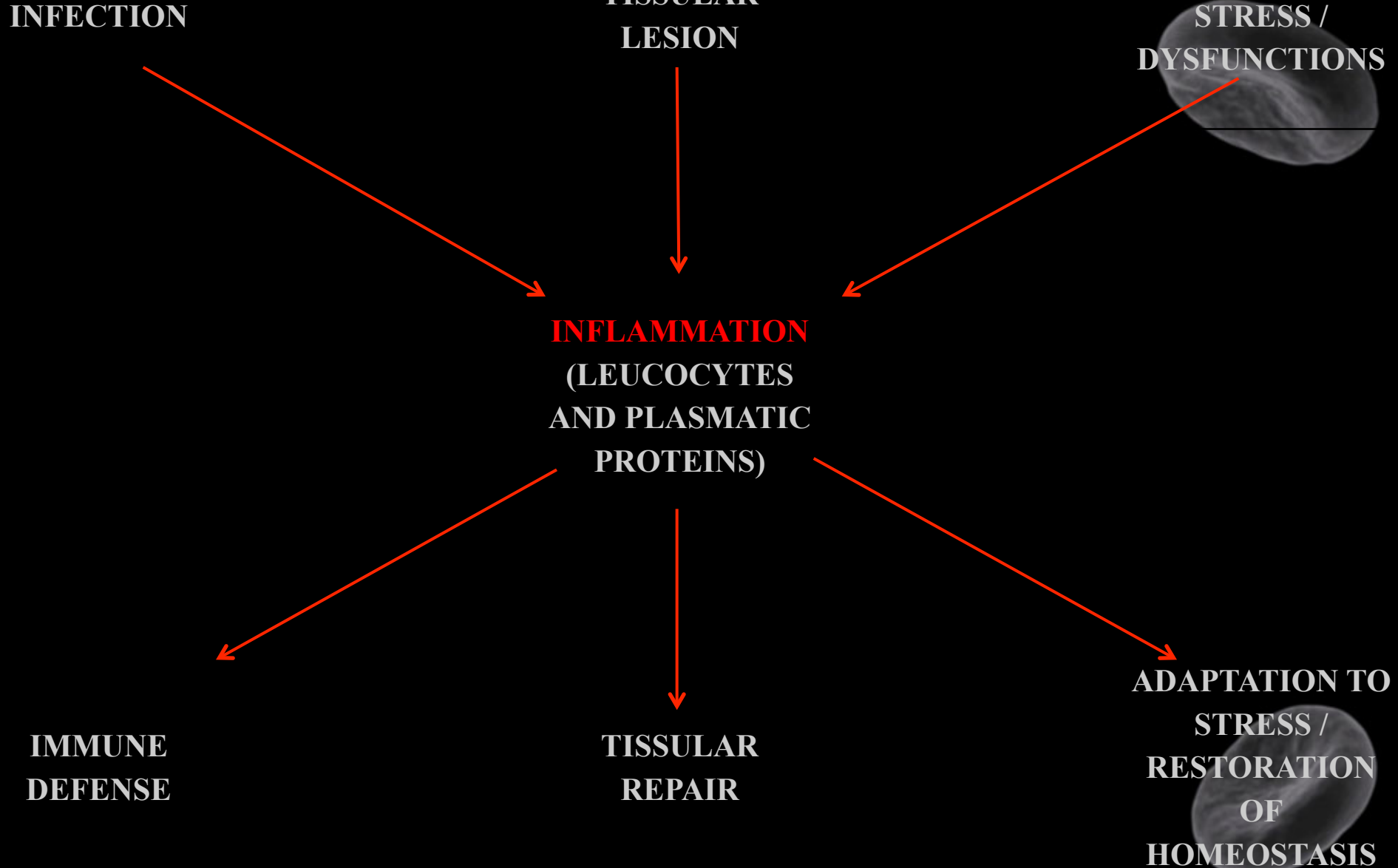
**TISSULAR
STRESS /
DYSFUNCTIONS**

**INFLAMMATION
(LEUCOCYTES
AND PLASMATIC
PROTEINS)**

**IMMUNE
DEFENSE**

**TISSULAR
REPAIR**

**ADAPTATION TO
STRESS /
RESTORATION
OF
HOMEOSTASIS**



**LYMPHATIC
CAPILLARIES**

ARTERY

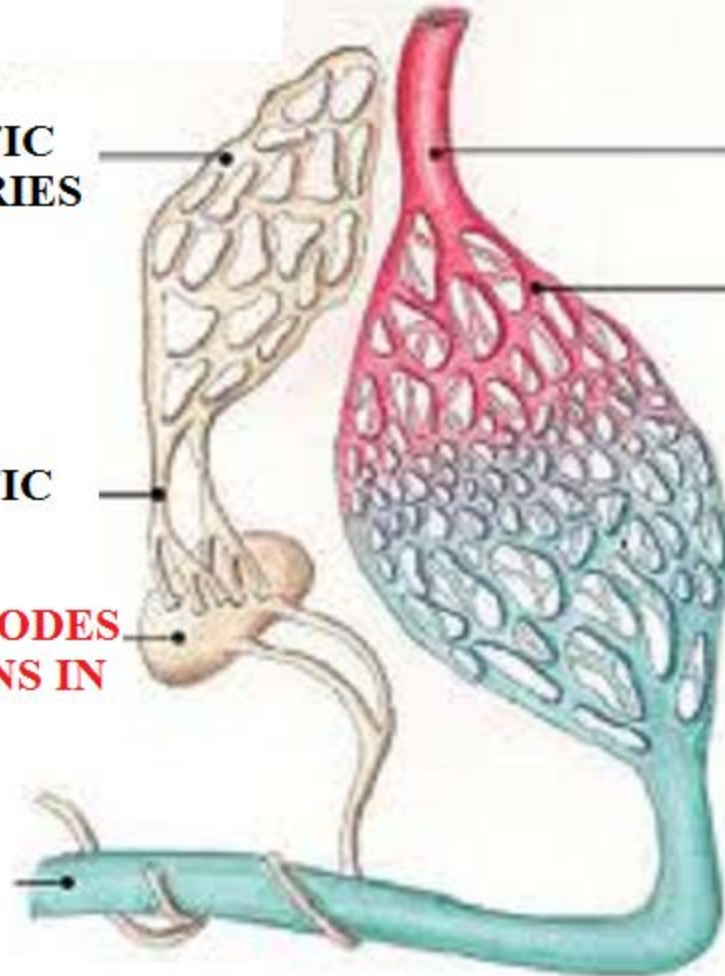
CAPILLARIES

**LYMPHATIC
VESSELS**

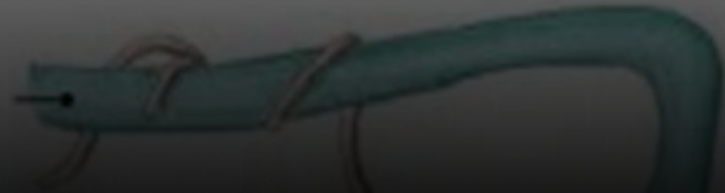
**LYMPH. NODES
> ANTIGENS IN
LYMPH**

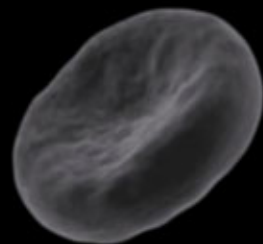
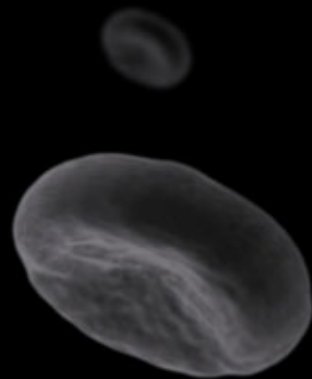
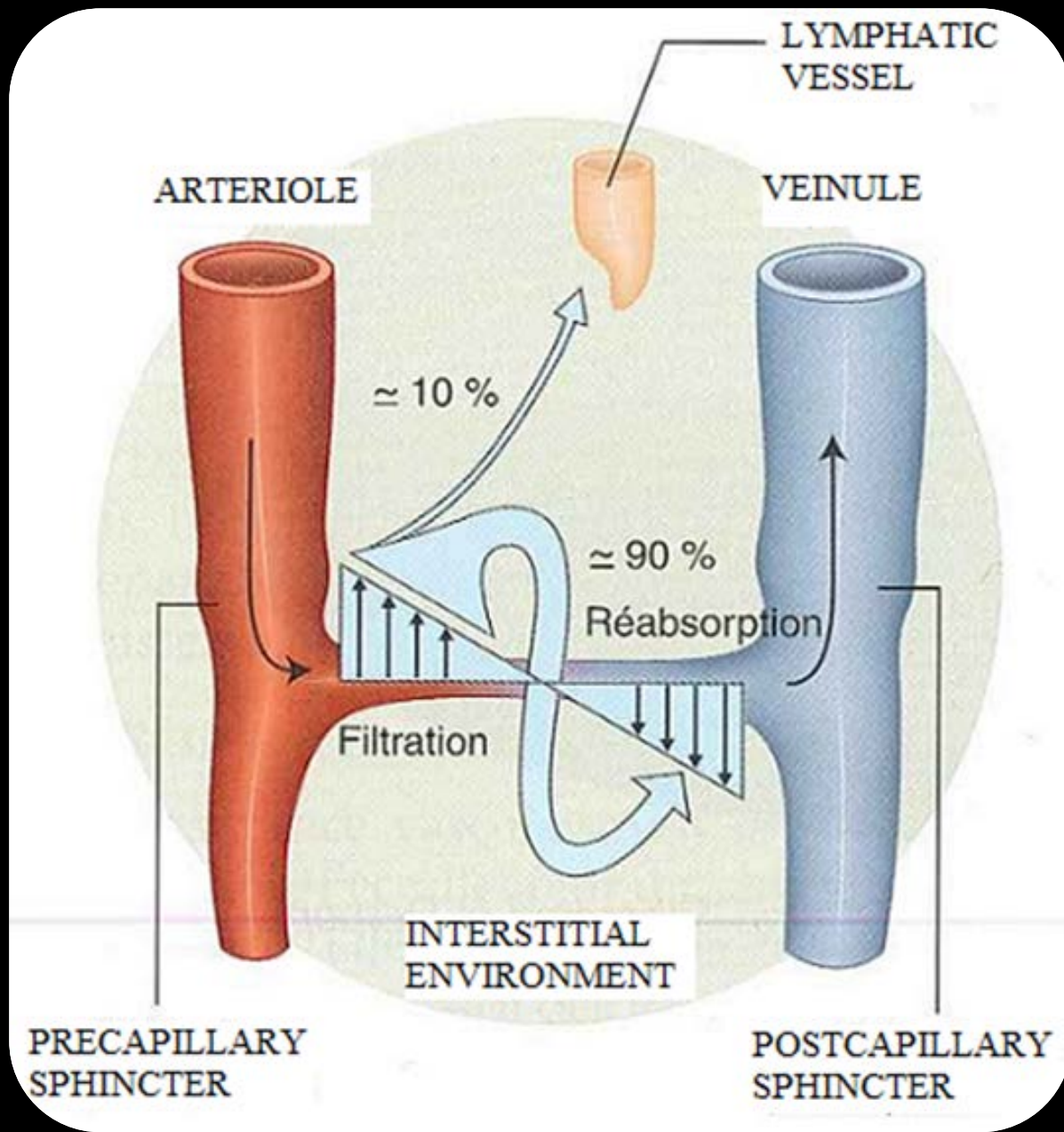
**SPLEEN
> ANTIGENS
IN BLOOD**

VEIN



VEIN

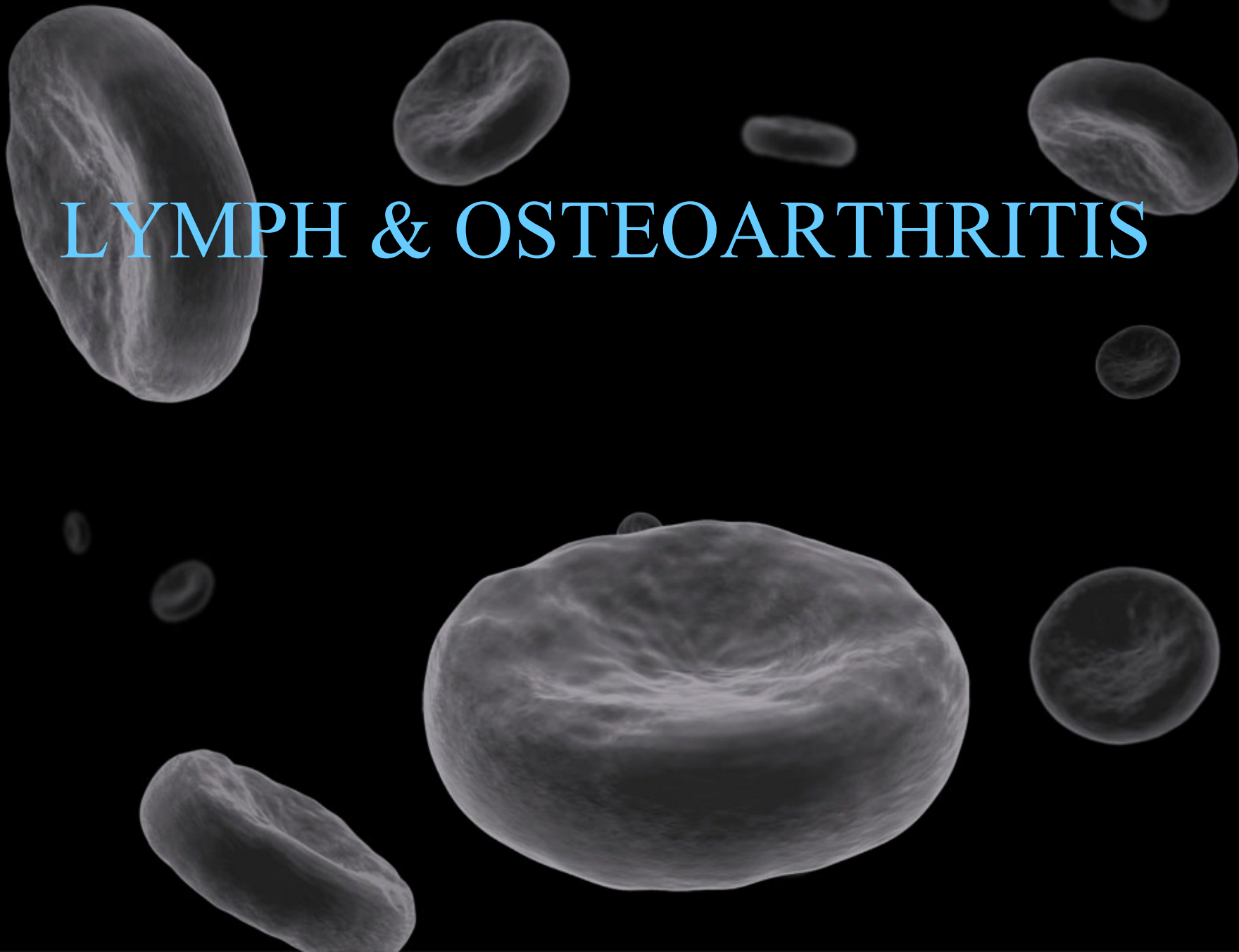


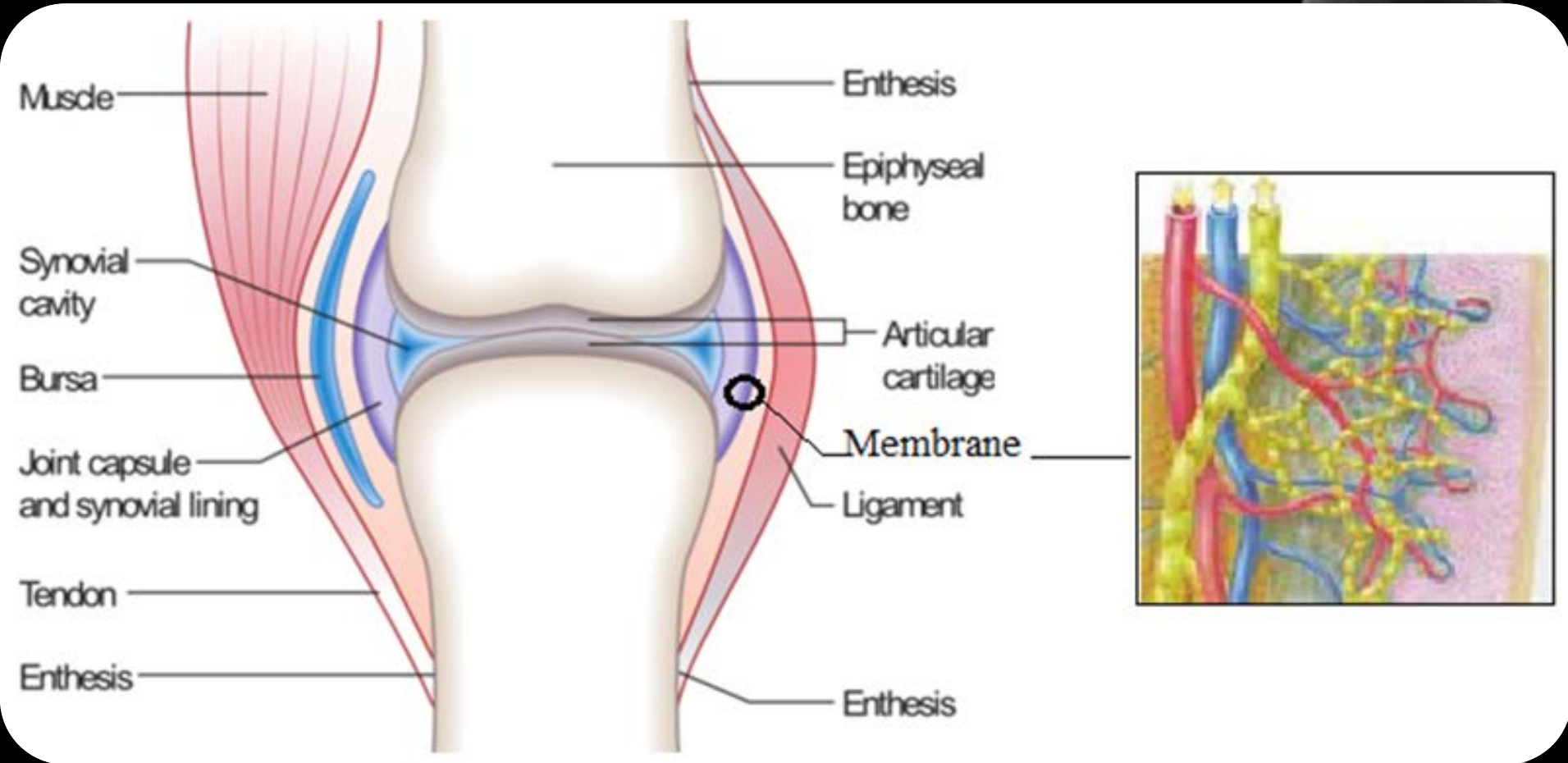


2BH1/CLEK
1/20/21 12:21:11

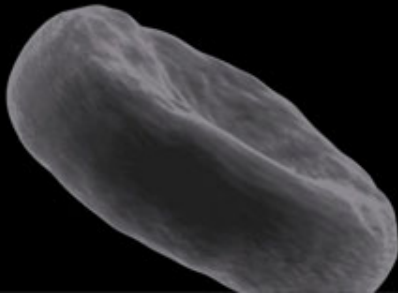
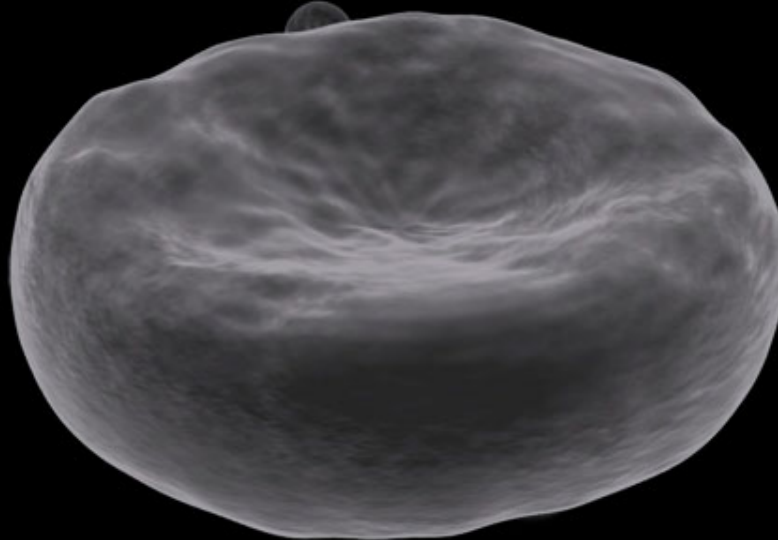
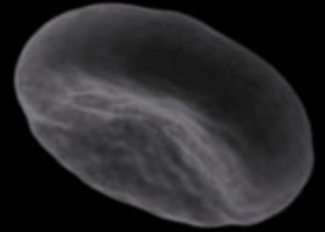
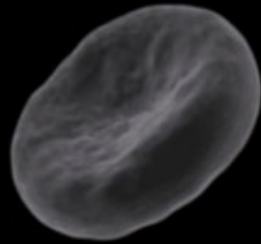
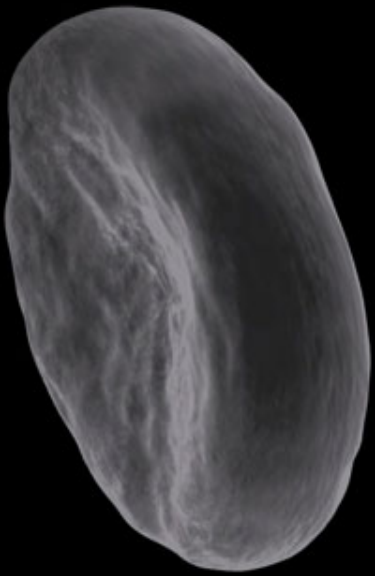
2BH1/CLEK
1/20/21 12:21:11

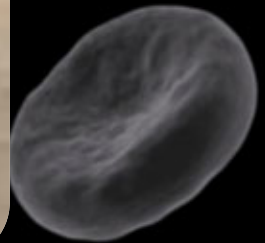
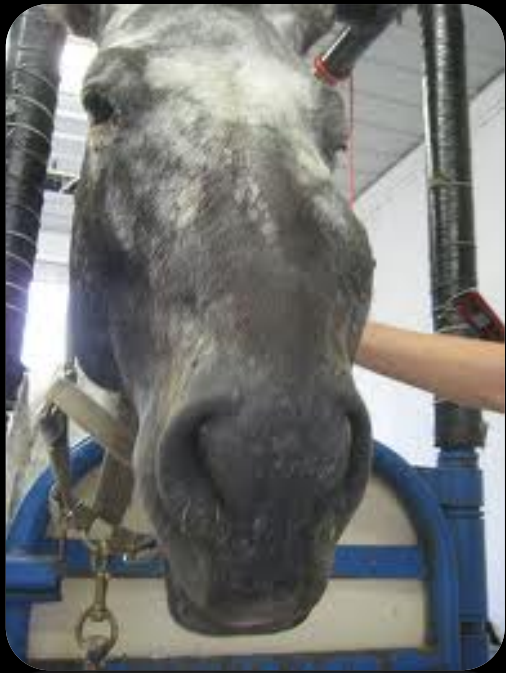
LYMPH & OSTEOARTHRITIS





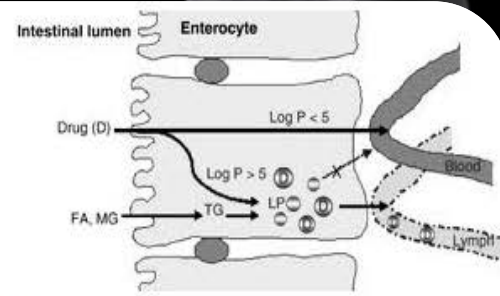
EDEMA



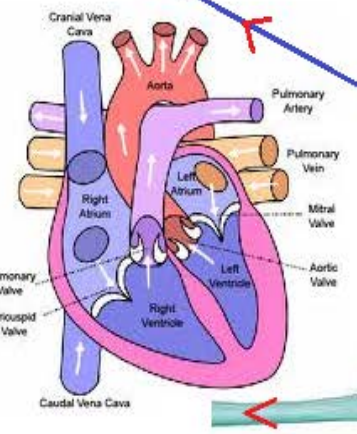


The image displays a collection of white blood cells against a black background. The cells vary in size and shape, with some showing distinct internal structures like nuclei and granules. The text 'LYMPH & VISCERAL TREATMENT' is centered in a light blue, serif font. The cells are scattered around the text, with a large, prominent cell in the lower center and several smaller ones in the upper and right areas.

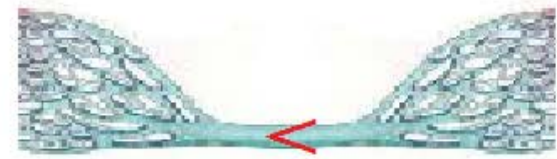
LYMPH & VISCERAL TREATMENT



GASTROINTESTINAL LYPH.SYSTEM



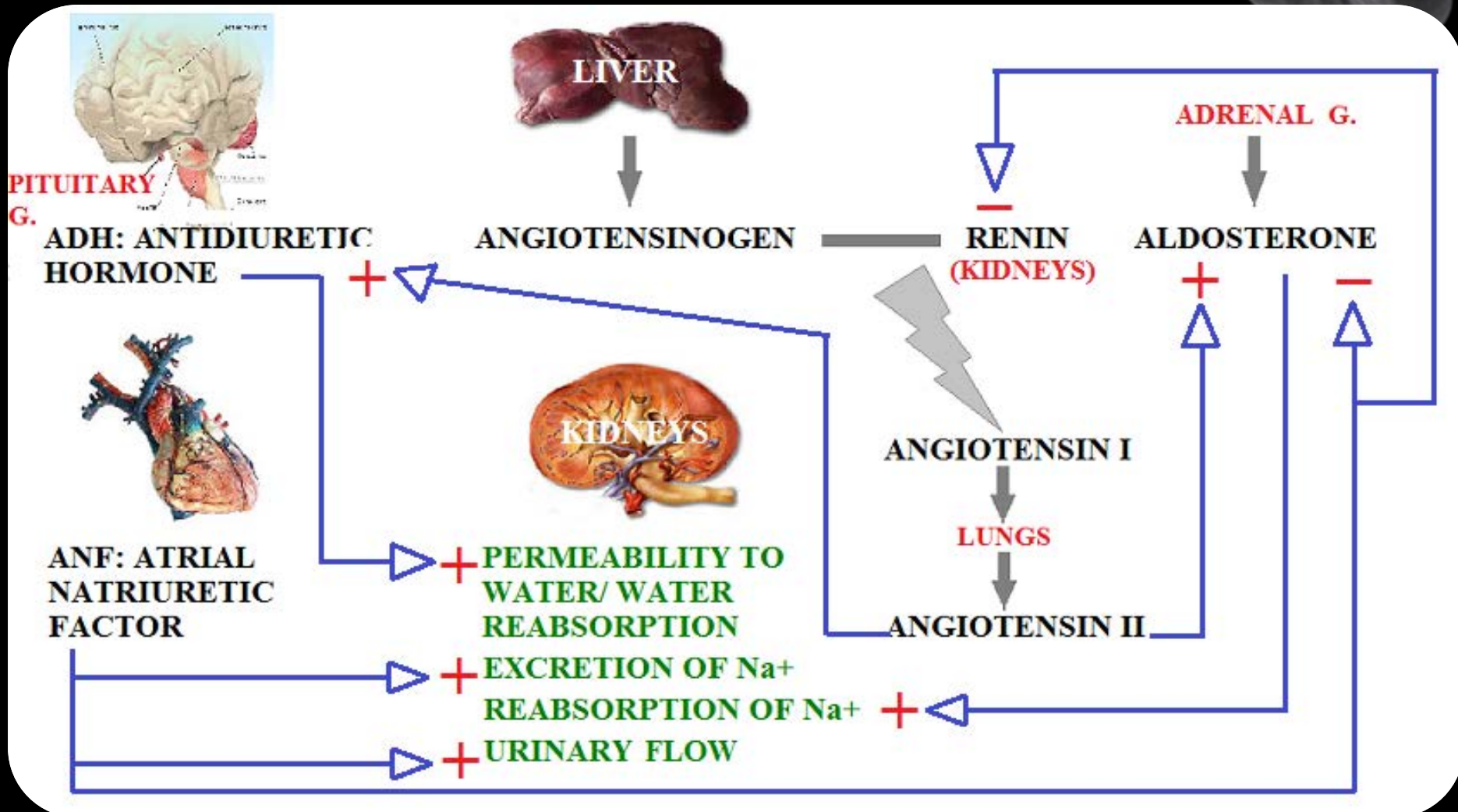
HEPATIC VEIN
> CAUDAL VENA CAVA



HEPATIC PORTAL VEIN

INTESTINE
STOMACH
SPLEEN
PANCREAS

Lymph & visceral treatment: Water balance






INDICATIONS OF MANUAL LYMPHATIC DRAINAGE



Edema, Traumatic injuries, Chronic inflammations, Digestive system diseases, Connective tissue diseases (Arthritis, Arthrosis), Dermatological and immunological problems, Rashes, Congestion, Improving wound healing and absorption of the hematoma, Myositis, Myoglobinuria, Burns, Pre/Postoperative...



CONTRAINDICATIONS OF MANUAL LYMPHATIC DRAINAGE

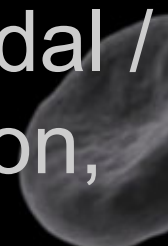


Absolute contraindications:

Acute infections, Suspected malignancies.

Relative contraindications:

Cardiac / Hepatic / Respiratory / Thyroidal /
Renal failure, Asthma, Synovial effusion,
Gestation, Nursing.



“We strike at the source of life and death when we go to the lymphatics”, A.T.Still

