

PRIMO CONGRESSO INTERNAZIONALE DI
OSTEOPATIA IN AMBITO **VETERINARIO**

Roma 28-29-settembre 2012

Manual therapies for dogs and cats
Shiatsu

Dott. Pozzi Roberta DVM Milano
Acupuncture Shiatsu
SIAV President (Italiana veterinary Acupuncture
Society)
Master Level II "Veterinary Sport Physiology and
Physical therapy applied to the dog"
www.siav-itvas.org www.pozzi.cc

An illustration showing a person in a white and orange patterned kimono standing and performing Shiatsu on another person lying on a red and brown patterned mat. The person lying down is wearing a red kimono and has their back to the viewer. The background is a simple yellow and white striped pattern.

指圧

JAPANESE WORD

SHI = FINGER

ATSU = PRESSURE

SHIATSU

- BORN AT THE BEGINNING OF THIS CENTURY



ANMA



ANFA'



TUINA'

1° TEXT GOES BACK AT 200 A.C.

ANMA'

**" Feel with the hands used
with the technique"**

SHIATSU

**IS A TREATMENT
NOT A MASSAGE**



**WHAT'S THE PURPOSE OF
SHIATSU?**

WHAT DES IT CURE?

FOR WHAT IS IT EFFECTIVE



SHIATSU

“TAKE A CARE”

IS TAKE A CARE OF....

SHIATSU TAKES A CARE OF ANIMALS

"Harmony essere vivente"

- **Psychophysical health**
- **Hale animal**
- **Preventive**
- **Illness is a disharmony**
- **energy balance**



Chinese proverb

"If you give a man a fish you feed him for one day, but if you teach him fishing feed him for all life"



Contact

First wave of the shiatsu's practice
is the hands contact

Contact-to-Transmit-
Receive Communicate

Touch with their hands is in
instinctive gesture

The hands have an antenna
that transmits and
receives sensation in the form
of feeling inexpressible with words

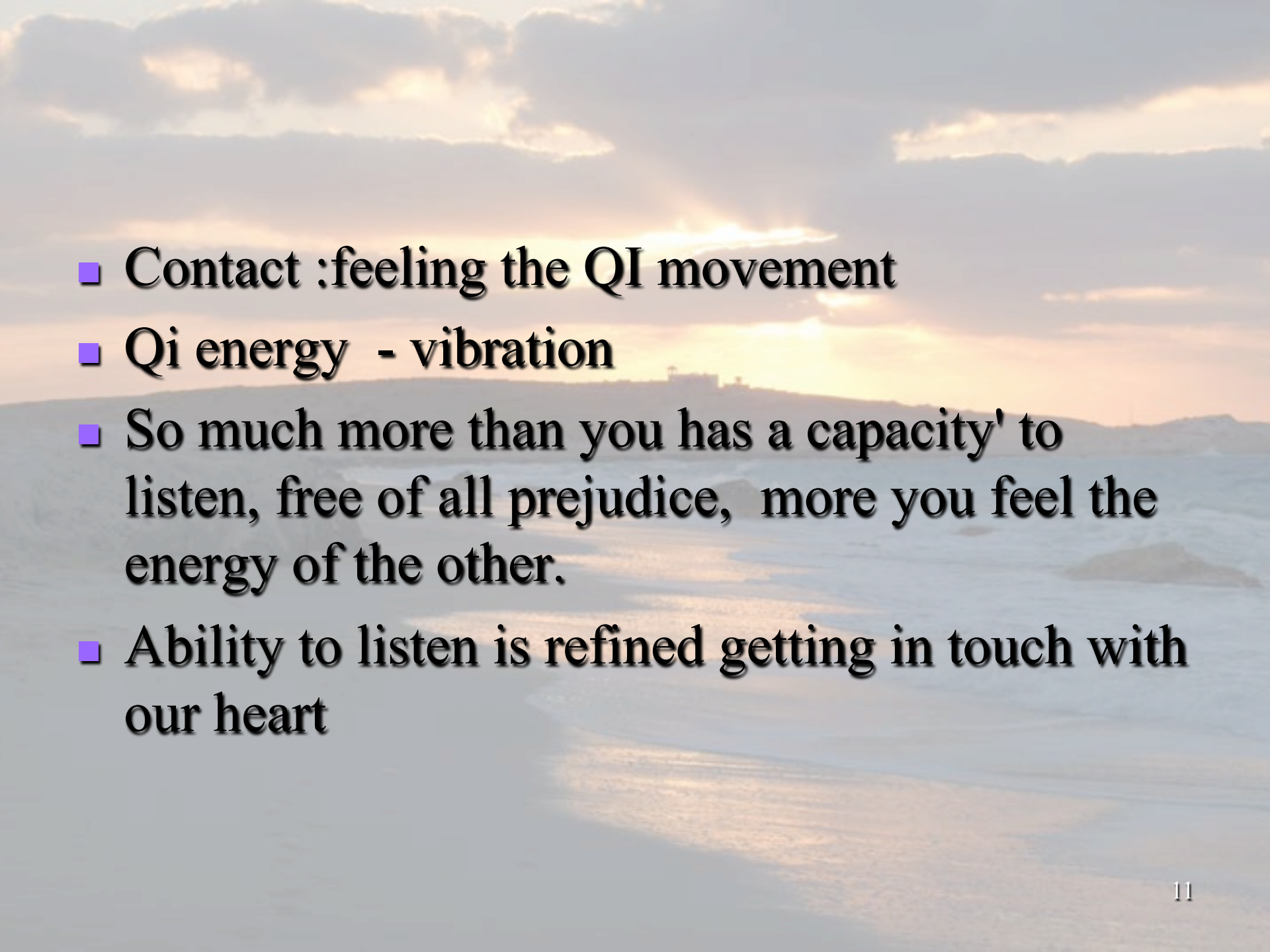
Contatto

• SUBSTANCE

• ENERGY

• QI



- 
- **Contact :feeling the QI movement**
 - **Qi energy - vibration**
 - **So much more than you has a capacity' to listen, free of all prejudice, more you feel the energy of the other.**
 - **Ability to listen is refined getting in touch with our heart**

Heart-Heart

☯ If the hand listen through the heart
make its spokesperson

***"The heart's path is so deep. Deep
as the oceans and boundless as the
heavens. How many really know?"***

So Wen cap. 78

Hand

The palm represents the heart is more soft and less mobile than the other fingers
vehicle energy deep.



Breath

Breath moves energy .

I carry within inhale, exhale out
I let go so that new energy can enter.

Hara Belly is individual's energy center

**Hara : “ think and act with the belly”
“ a visceral way”**

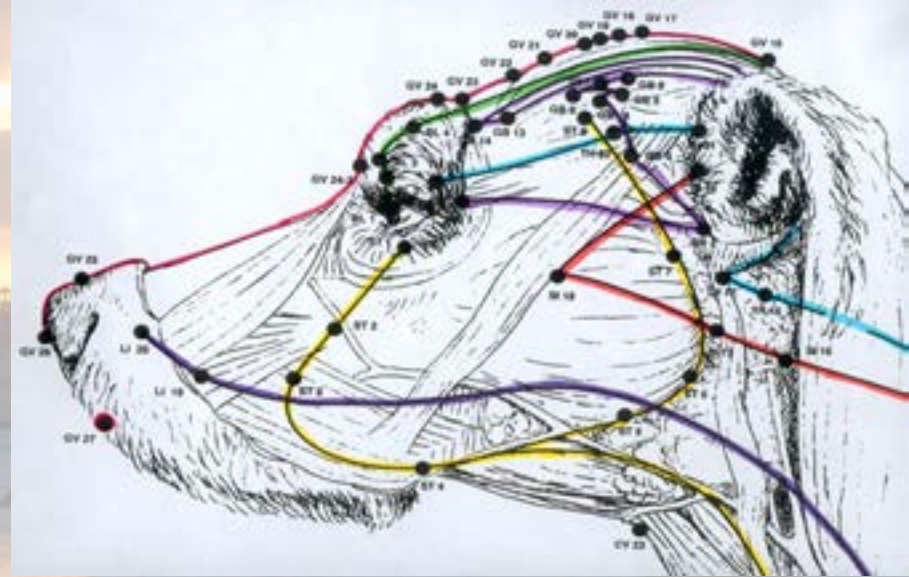


**A different quality of the pressure
with breath and posture**

Pressure

- Zone
- Meridians
- Acupuncture points

tsubo



Pressing it comes in contact with the
Qi, it stimulates
Muscular force is limited

SHIATSU PRESSURE



STATIC



REMAIN

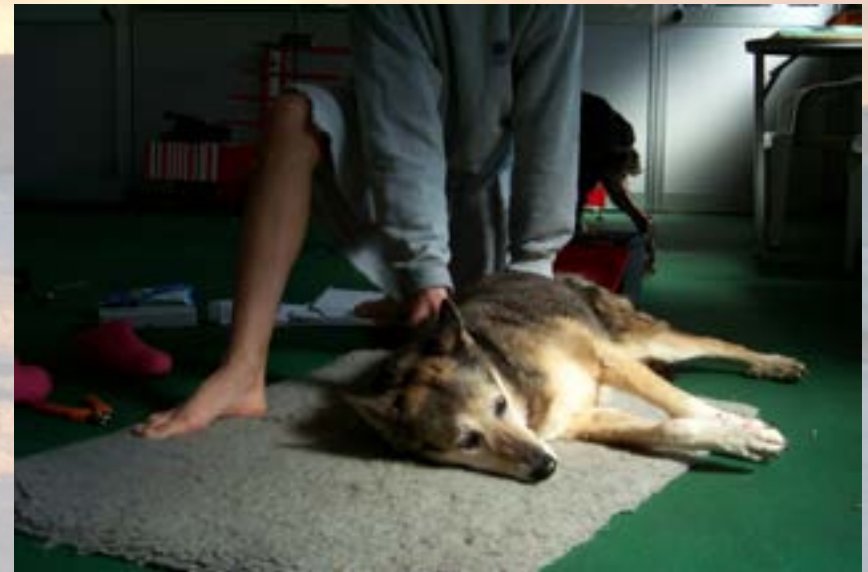


CONSTAN

USE OF WEIGHT

imbalance of his own body towards the area to be treated

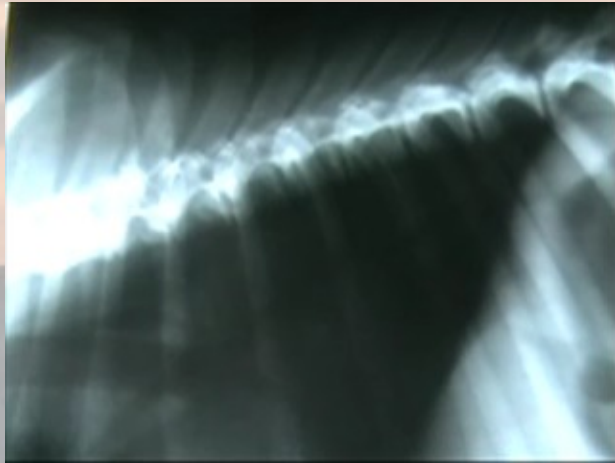
- **OWN WEIGHT NO PHYSICAL STRENGTH**
- **BALANCE BETWEEN MOTHER HAND (YIN) END JOB HAND(YANG)**
- **ENERGY MOVES FROM MY DAN-DIEN TO THE ANIMALS**

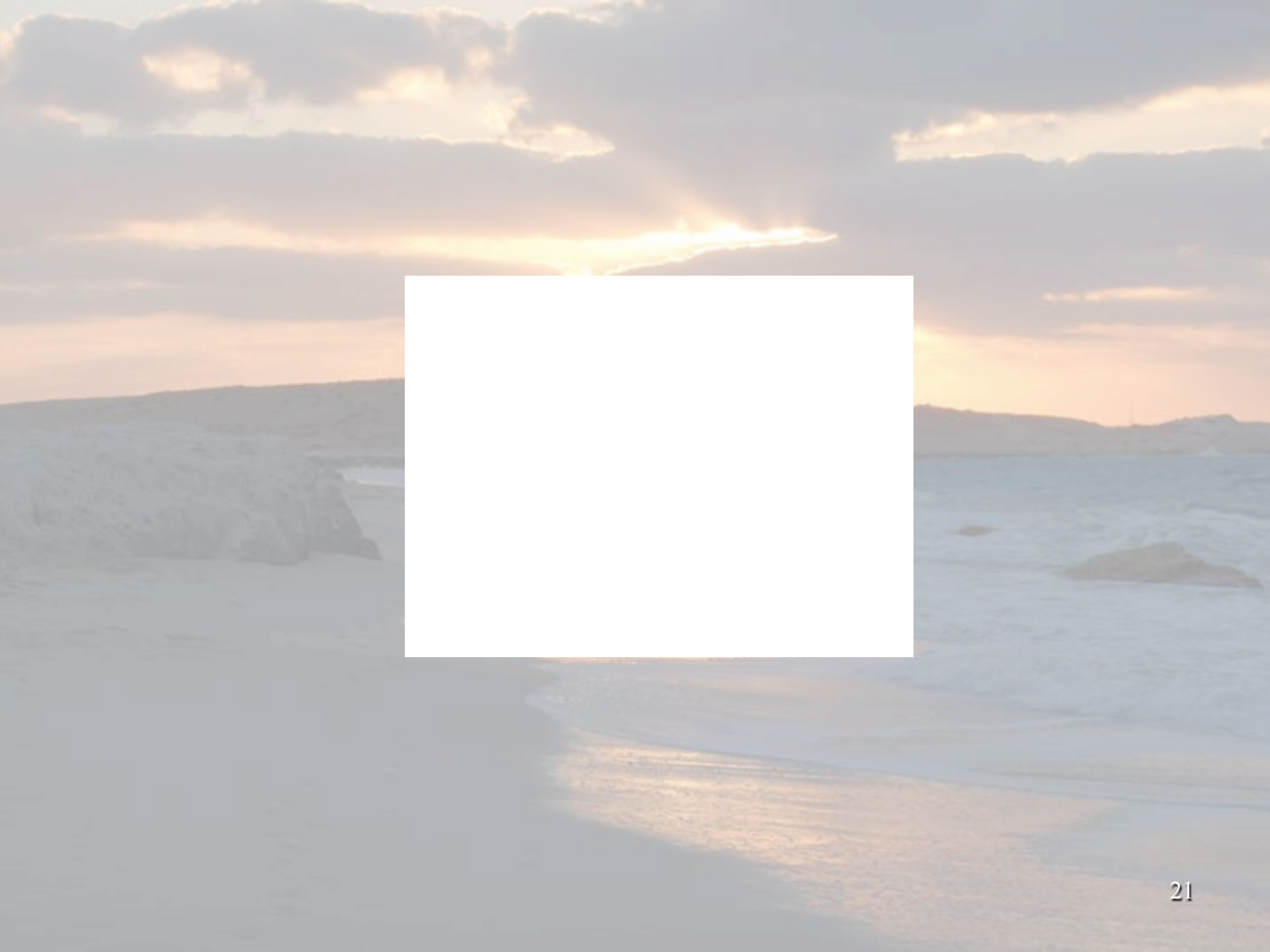


Baloo



BALOO





Bibliography

Huang di Nei Jing Su Wen (i primi 11 capitoli)

a cura di E. Rochat de la Vallée; C. Larre; Jaca Book, Milano
1994

Lo Shiatsu e il Cuore in Vuoto del Veterinario
(R. Pozzi)

Professione Veterinaria n. 1 – Gennaio 2006 (pag. 14)
Cremona

Il Grande Libro dello Shiatsu

Insegnanti scuola Xin , cura di F. Bottalo;
Xenia Edizioni 2003